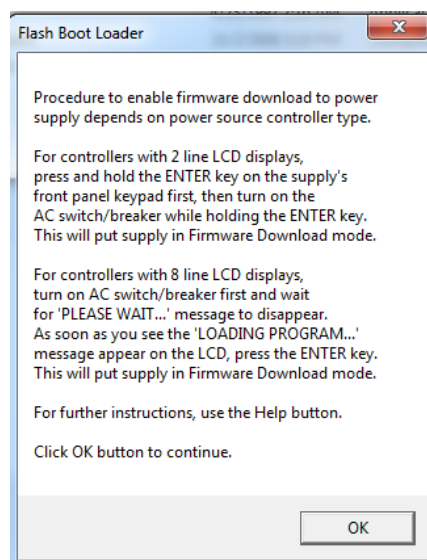


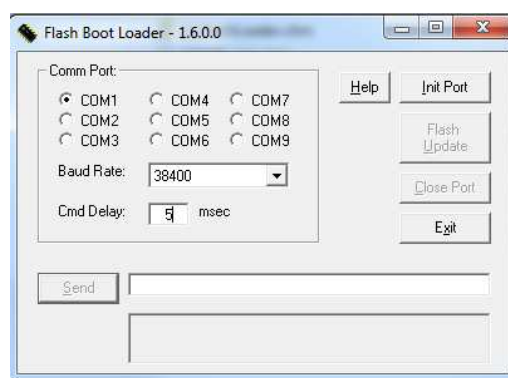
Installation Guide for California Instruments Compact iX Firmware

Installation Instructions

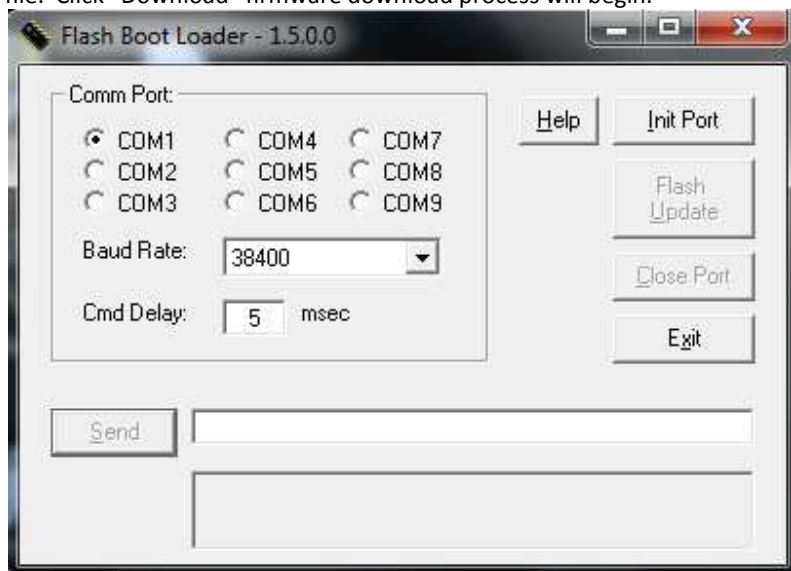
1. Navigate to <http://www.programmablepower.com/ac-power-source/Compact-iX-Series/Downloads.htm>
2. Download and install Flash Loader V1.6.0. Follow the onscreen instructions. Click OK.



3. The following Flash Boot Loader window will appear below:



4. Select the proper Comm Port configured on your system. Baud Rate set to 38400 and Cmd Delay set to 5 msec. Click "Init Port". If connection is successful "Flash Update" will become clickable. Click "Flash Update" then click Browse and select firmware "*.hex" file. Click "Download" firmware download process will begin.



California Instruments Product Support:

On-Line Request:

www.programmablepower.com/support/support_CallInst.htm

Direct: ci.ppd@ametek.com

Phone: **800-733-5427**